

# TEST ITEMS

Cat. #	TEST ITEMS	DISEASES	CUT-OFF VALUE	SAMPLE TYPES	MEASURING RANGE	SAMPLE VOLUME	REACTION TIME	QUALIFICATION
<b>Cardiac Markers</b>								
IF1001	cTnI	Myocardial infarction	0.10 ng/mL	S/P/WB	0.10-50.00 ng/mL	100 µL	10 min	NMPA CE
IF1098	TnT	Myocardial infarction	14.0 pg/mL	S/P/WB	10.0-10000.0 pg/mL	100 µL	15 min	NMPA CE
IF1089	BNP	Heart failure	100.0 pg/mL	P/WB	5.0-5000.0 pg/mL	100 µL	10 min	NMPA CE
IF1002	NT-proBNP	Heart failure	300 pg/mL	S/P/WB	100-35000 pg/mL	100 µL	10 min	NMPA CE
IF1005	CK-MB/cTnI/Myo	Myocardial damage /infarction	CK-MB: 5.00 ng/mL cTnI: 0.10 ng/mL Myo: 70.0 ng/mL	S/P/WB	2.50-80.00 ng/mL 0.10-50.00 ng/mL 30.0-600.0 ng/mL	100 µL	10 min	NMPA CE
IF1012	CK-MB/cTnI	Myocardial damage /infarction	CK-MB: 5.00 ng/mL cTnI: 0.10 ng/mL	S/P/WB	2.50-80.00 ng/mL 0.10-50.00 ng/mL	100 µL	10 min	CE
IF1014	H-FABP	Myocardial damage	6.36 ng/mL	S/P/WB	1.00-120.00 ng/mL	100 µL	3 min	NMPA CE
IF1016	CK-MB/cTnI/H-FABP	Myocardial damage /infarction	CK-MB: 5.00 ng/mL cTnI: 0.10 ng/mL H-FABP: 6.36 ng/mL	S/P/WB	2.50-80.00 ng/mL 0.10-50.00 ng/mL 2.00-100.00 ng/mL	100 µL	10 min	NMPA CE
IF1018	CK-MB	Myocardial injury	5.00 ng/mL	S/P/WB	2.50-80.00 ng/mL	100 µL	10 min	CE
<b>Coagulation Markers</b>								
IF1006	D-Dimer	Venous thromboembolism	0.50 mg/L	P/WB	0.10-10.00 mg/L	100 µL	10 min	NMPA CE
<b>Inflammation</b>								
IF1003	hs-CRP+CRP	Cardiovascular inflammation /normal inflammation	3.0 mg/L 10.0 mg/L	S/P/WB/ Fingertip blood	0.5-200.0 mg/L	10 µL	3 min	NMPA CE
IF1007	PCT	Sepsis, bacterial infection	0.10 ng/mL	S/P/WB	0.05-50.00 ng/mL	100 µL	15 min	NMPA CE
IF1015	PCT/CRP	Sepsis, bacterial infection	PCT: 0.10 ng/mL CRP: 3.0 mg/L	S/P/WB	0.10-50.00 ng/mL 0.5-200.0 mg/L	100 µL	15 min	NMPA CE
IF1044	SAA	Bacterial/Virus infection	10.0 mg/L	S/P/WB/ Fingertip blood	5.0-200.0 mg/L	10 µL	5 min	NMPA CE
IF1090	SAA/CRP	Neonatal sepsis, Bacterial/virus infection	SAA: 10.0 mg/L CRP: 10.0 mg/L	S/P/WB/ Peripheral blood	5.0-200.0 mg/L 0.5-200.0 mg/L	10 µL	5 min	NMPA CE
IF1088	IL-6	Acute inflammation	7.0 pg/mL	S/P/WB/ Peripheral blood	1.5-4000.0 pg/mL	100 µL	15 min	NMPA CE
<b>Renal Function</b>								
IF1008	CysC	Acute and chronic renal diseases	0.51-1.09 mg/L	S/P/WB	0.50-10.00 mg/L	10 µL	3 min	NMPA CE
IF1009	mAlb	Diabetic nephropathy, hypertensive nephropathy	20.0 mg/L	Urine	10.0-200.0 mg/L	100 µL	3 min	NMPA CE
IF1010	NGAL	Acute kidney injury	Serum: 200.0 ng/mL Urine: 100.0 ng/mL	S/Urine	50.0-5000.0 ng/mL	10 µL	10 min	NMPA CE
IF1011	β <sub>2</sub> -MG	Acute and chronic kidney diseases/tumours	0.80-3.00 mg/L	S/P/WB	0.50-20.00 mg/L	10 µL	3 min	NMPA CE
<b>Diabetes Mellitus</b>								
IF1017	HbA1c	Diabetes mellitus	3.80%-5.80%	WB	2.00%-14.00%	10 µL	5 min	NGSP NMPA IFCC CE
<b>Metabolic Marker</b>								
IF1031	25-OH-VD	Osteomalacia, osteoporosis	30.00-50.00 ng/mL	S/P	8.00-70.00 ng/mL	40 µL	15 min	NMPA CE
<b>Thyroid Function</b>								
IF1024	TSH	Thyroid malfunction	0.27-4.20 µIU/mL	S/P	0.10-50.00 µIU/mL	100 µL	15 min	NMPA CE
IF1022	T3	Hyperthyroidism, hypothyroidism	1.30-3.10 nmol/L	S/P	0.30-10.00 nmol/L	40 µL	15 min	NMPA CE
IF1023	T4	Hyperthyroidism, hypothyroidism	59.00-154.00 nmol/L	S/P	5.40-320.00 nmol/L	40 µL	15 min	NMPA CE
IF1067	ft3	Hyperthyroidism, hypothyroidism	3.10-6.80 pmol/L	S/P/WB	0.40-50.00 pmol/L	40 µL	15 min	CE
IF1068	ft4	Hyperthyroidism, hypothyroidism	12.00-22.00 pmol/L	S/P/WB	0.30-100.00 pmol/L	40 µL	15 min	CE

Cat. #	TEST ITEMS	DISEASES	CUT-OFF VALUE	SAMPLE TYPES	MEASURING RANGE	SAMPLE VOLUME	REACTION TIME	QUALIFICATION
<b>Reproduction/Fertility</b>								
IF1013	HCG+β	Fertility	5.1 mIU/mL	S/P	5.0-10000.0 mIU/mL	100 µL	10 min	NMPA CE
IF1055	LH	PCOS, infertility evaluation	Refer to User Manual	S/P	0.20-150.00 mIU/mL	100 µL	15 min	NMPA CE
IF1056	FSH	PCOS, infertility evaluation and pituitary disorders	Refer to User Manual	S/P	0.20-150.00 mIU/mL	100 µL	15 min	NMPA CE
IF1066	AMH	Fertility, PCOS, gonadal function, precocious/late puberty	Refer to User Manual	S/P	0.10-20.00 ng/mL	200 µL	15 min	CE
IF1048	PRL	Infertility, gonadal disorders	Refer to User Manual	S/P	0.50-200.00 ng/mL	100 µL	15 min	CE
IF1071	Prog	Infertility, evaluation of ovulation	Refer to User Manual	S/P	0.10-40.00 ng/mL	100 µL	15 min	CE
<b>Tumor Markers</b>								
IF1053	tPSA	Prostate cancer	4.00 ng/mL	S/P	0.50-100.00 ng/mL	100 µL	15 min	
IF1072	fPSA	Prostate cancer	1.00 ng/mL	S/P	0.05-30.00 ng/mL	100 µL	10 min	
IF1050	AFP	Liver cancer, cancer of ovaries or testicles, etc.	7.0 ng/mL	S/P	2.0-500.0 ng/mL	100 µL	15 min	CE
IF1051	CEA	Cancer marker: colon cancer etc.	4.7 ng/mL	S/P	2.0-500.0 ng/mL	100 µL	15 min	CE
<b>Infectious Disease</b>								
IF1057	Anti-HCV	Hepatitis C	1.00 S/CO	S/P	1.00-20.00 S/CO	100 µL	15 min	
IF1058	Anti-TP	Syphilis	1.00 S/CO	S/P	1.00-50.00 S/CO	100 µL	15 min	CE
IF1059	Anti-HIV	AIDS	1.00 S/CO	S/P	1.00-1000.00 S/CO	100 µL	15 min	
IF1064	HBsAg	Hepatitis B	1.00 IU/mL	S/P	1.00-100.00 IU/mL	100 µL	15 min	
IF1063	Anti-HBs	Hepatitis B	10.00 mIU/mL	S/P/WB	10.00-1000.00 mIU/mL	100 µL	15 min	
IF1084	2019-nCoV IgM/IgG	COVID-19	1.00 COI	S/P/WB		100 µL	10 min	CE
IF1091	SARS-CoV-2 Antigen	COVID-19	1.00 COI	Nasal swab/Saliva		100 µL	15 min	CE
IF1095	SARS-CoV-2 Neutralizing Antibody	COVID-19	Refer to User Manual	S/P/WB/ Fingertip blood		40 µL	15 min	CE
IF1047	<i>H. pylori</i>	<i>H. pylori</i> infection	5.0 ng/mL	Stool	1.0-200.0 ng/mL	3 drops (about 100 µL)	10 min	CE
<b>Specific Protein and Rheumatism</b>								
IF1075	RF	Rheumatoid arthritis	15.9 IU/mL	S/P/WB	10.0-640.0 IU/mL	100 µL	10 min	CE
IF1076	ASO	Rheumatic fever, acute glomerulonephritis, group A streptococcal infection	400.0 IU/mL	S/P/WB	60.0-1370.0 IU/mL	100 µL	10 min	CE
<b>Others</b>								
IF1077	Ferritin	Anemia/tumors	Male: 30.00-400.00 ng/mL Female: 13.00-150.00 ng/mL	S/P	0.50-1000.00 ng/mL	10 µL	15 min	CE
IF1069	Total IgE	Allergic disorders	Refer to User Manual	S/P/WB	1.00-2000.00 IU/mL	10 µL	15 min	CE

Coming Soon: FOB, Anti-CCP, Folate...

**GP Getein Biotech, Inc.**

Add: No.9 Bofu Road, Luhe District, Nanjing, 211505, China  
Tel: +86-25-68568508/68568594  
Fax: +86-25-68568500  
E-mail: sales@getein.com.cn; overseas@getein.com.cn  
Web: en.bio-gp.com.cn

ISO 13485 FSC CE NMPA NGSP IFCC IVD



Sole Agent in Pakistan:

**Mian Scientific Corporation (Pvt) Ltd.**

www.miancorp.com

**Getein Biotech, Inc.**  
Stock Code: 603387

OPTIMIZED POINT-OF-CARE SOLUTION

# MAKING TEST EASY

## Getein1100

Immunofluorescence Quantitative Analyzer

Cardiac Markers

Coagulation Markers

Diabetes Mellitus

Inflammation

Thyroid Function

Metabolic Marker

Renal Function

Tumor Markers

Reproduction /Fertility

Infectious Disease

Sole Agent in Pakistan:

**Mian Scientific Corporation (Pvt) Ltd.**

www.miancorp.com

# Getein1100

Immunofluorescence Quantitative Analyzer



## HIGHLY EFFICIENT & ACCURATE

Advanced fluorescence immunoassay  
Multiple quality control



## REAL-TIME AND RAPID TEST

One-step test  
3-15 min/test  
5 sec/test for multiple tests



## CONVENIENT OPERATION

RFID card calibration  
Keyboard and mouse connectivity through USB port  
Handwriting input available  
Continuous test for 3 hours with lithium battery



## USER-FRIENDLY INTERFACE

Android system  
7 inch touch screen



## PORTABLE DESIGN

Small in size: 261 ×241 ×115 mm  
Light in weight: 2.0 kg

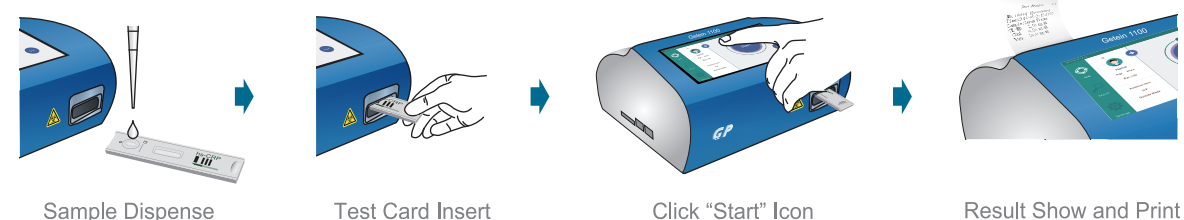


## LARGE MEMORY

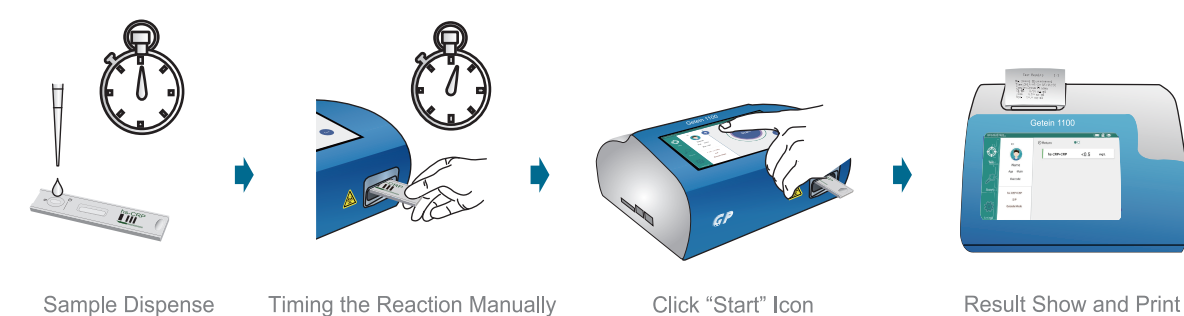
Up to 10,000 results storage capacity

## OPERATION MODES

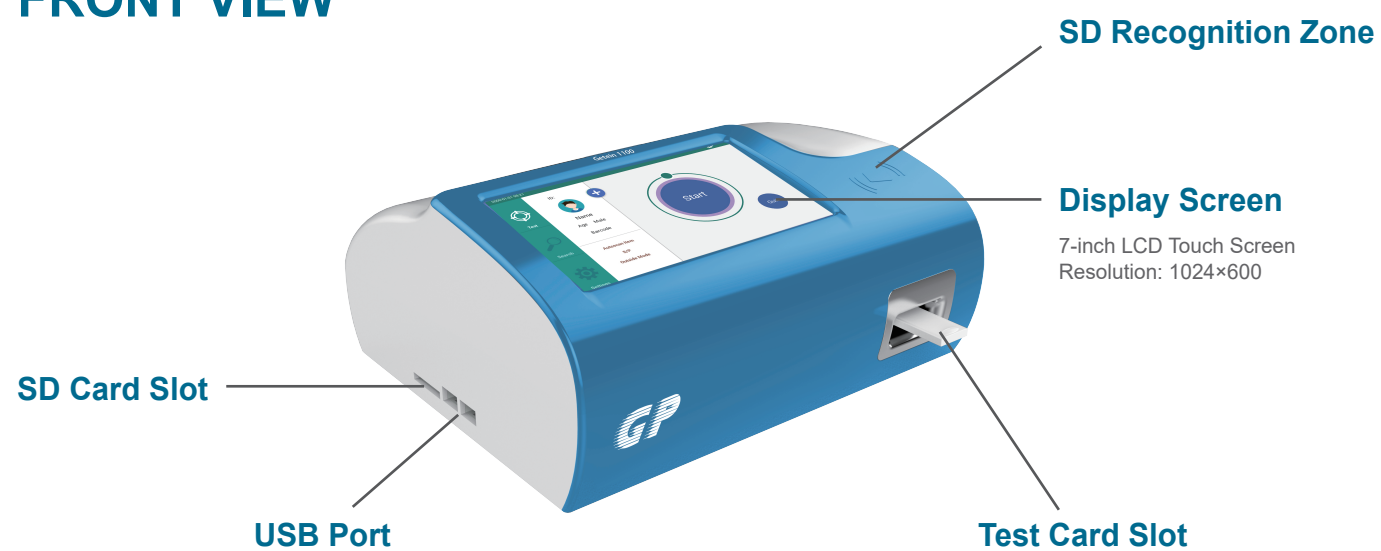
### Inside Mode (single sample rapid test mode)



### Quick mode (mass samples rapid test mode)



## FRONT VIEW



## TECHNICAL PARAMETERS

Methodology	Immunofluorescence	Screen	7 inch touch screen
Result	Quantitative	Power Supply	100-240 V~50 Hz/60 Hz, 60 VA
Sample Type	WB, Plasma, Serum, Urine, Stool, Nasal swab, Saliva, Capillary blood	Working Environment	Temperature: 10-35 °C Relative humidity ≤70% Air pressure 70.0~106.0 kpa
Storage Capacity	10000 data	Dimension	261 mm×241 mm×115 mm (D×W×H)
Language	English/Chinese/Spanish/Portuguese	Weight	2.0 kg